



Exterra Termite Interception & Baiting System

The End of the Line for Termites!

Which Termite Manager would make you feel safer?



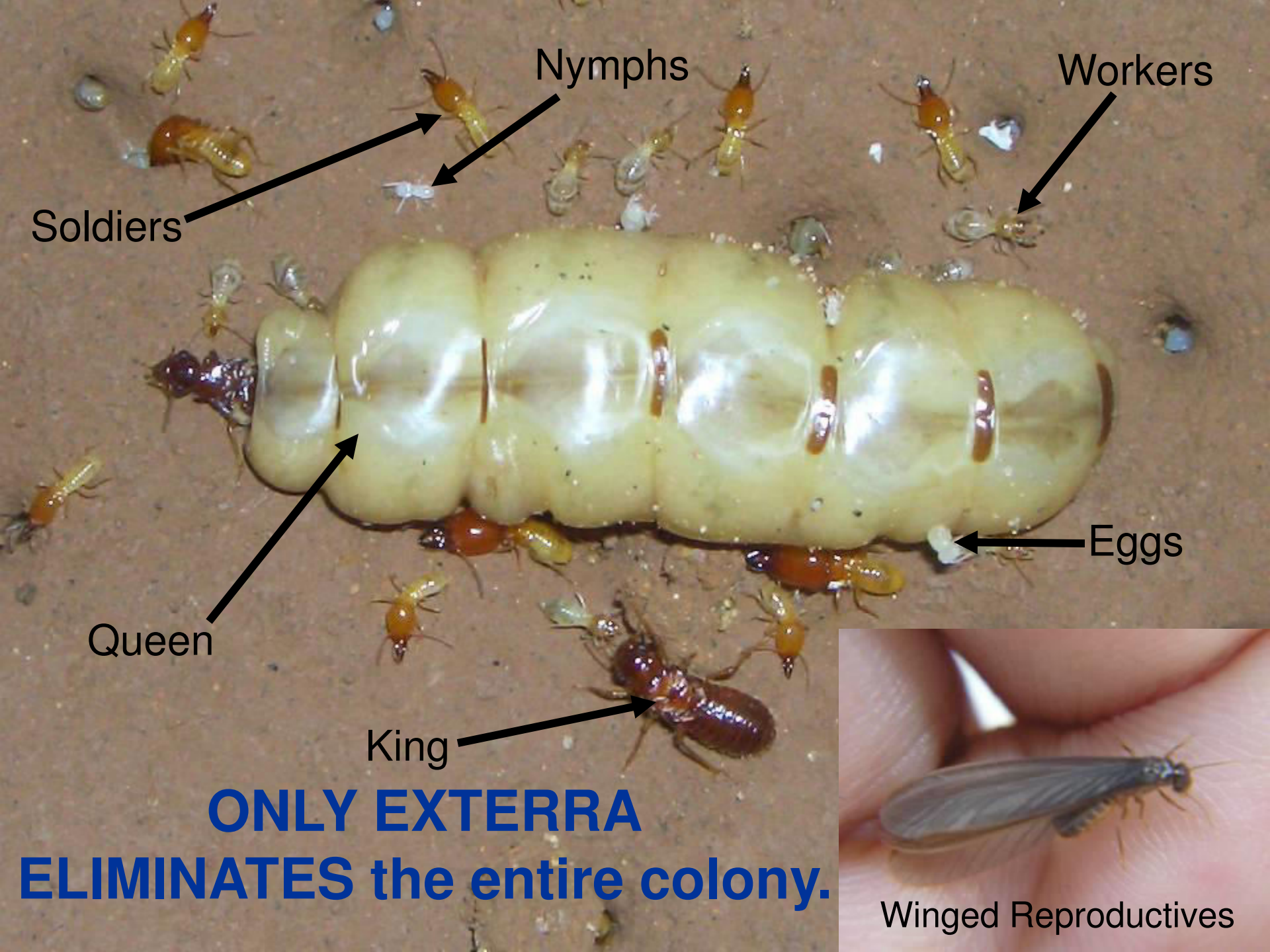
The logo for EXTERRA is a blue oval with a yellow circle inside. The word "EXTERRA" is written in a bold, sans-serif font, with "EX" in yellow and "TERRA" in blue.

EXTERRA

- A System for...
 - Eliminating termite COLONIES
 - More effective termite management
 - Environmentally responsible termite management

A smaller version of the EXTERRA logo, consisting of a blue oval with a yellow circle inside and the word "EXTERRA" in a bold, sans-serif font, with "EX" in yellow and "TERRA" in blue.

EXTERRA



Soldiers

Nymphs

Workers

Queen

King

Eggs

**ONLY EXTERRA
ELIMINATES the entire colony.**

Winged Reproductives

Here's how Exterra PROTECTS properties

- Exterra starts in the ground...
- In-ground Stations placed to intercept termites
 - Contain non-toxic timber interceptors



Or... In-concrete Stations

- are used if the building is surrounded by concrete



You've got termites in the property and you want them gone quickly...

- Exterra works inside homes very quickly!
- Above-ground Stations, are placed on points of termite activity, and baited right away
- This guarantees quick colony elimination



If foraging termites enter the property.....

- The termites are intercepted in the In-ground Stations
- The termites easily detected in the Stations
- Unique - NO DISTURBANCE Station



You've found termites, now you want them gone...

- Time to put **Requiem Termite Bait** to work
- This is added without disturbing the termites
- It is preferred to wood
- So they stop feeding on the timber interceptors
- And feed on the Requiem



Termites can't resist Requiem

- The termites readily eat Requiem..... and
- Feed it to all the colony
- So **ALL** the termites die
- And the colony is quickly eliminated



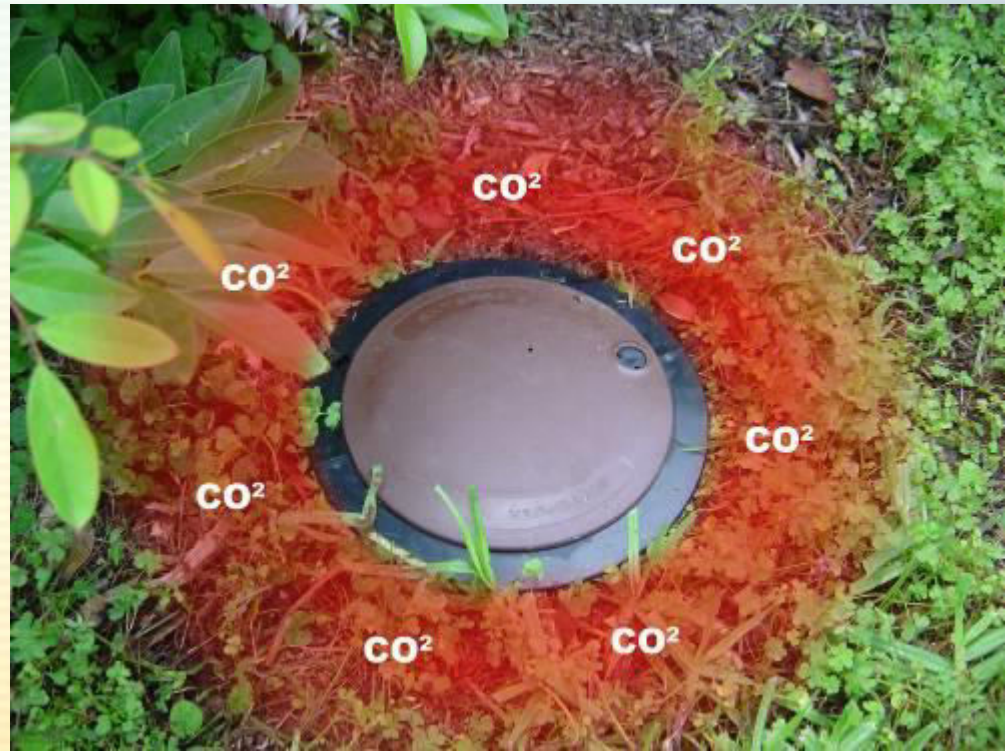
Once the Colony is ELIMINATED

- Any Above-ground Stations are removed
- All Requiem is removed
- Fresh timber interceptors are placed in the In-ground Stations
- 'Peace of Mind' monitoring continues...



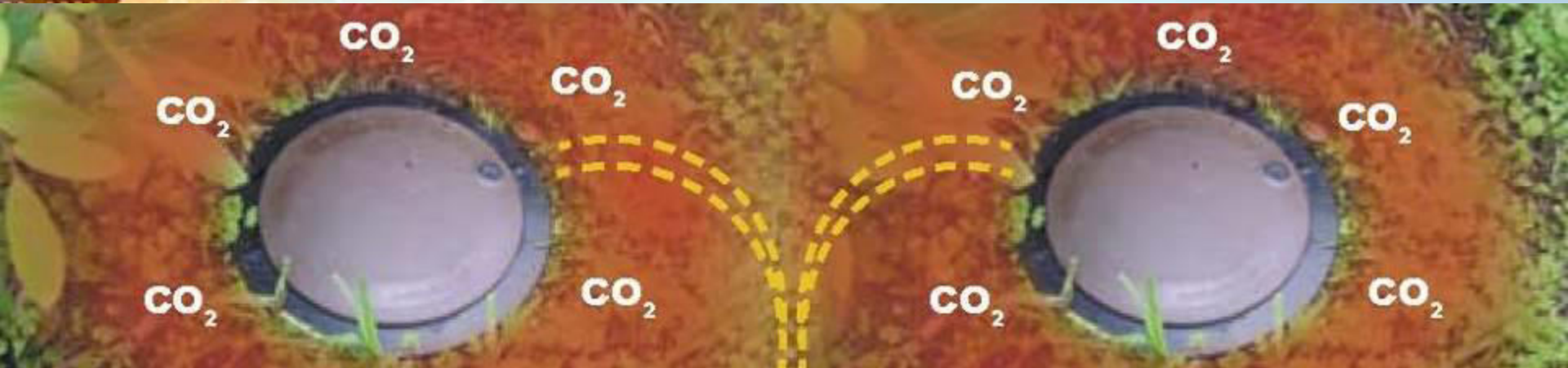
Now with FOCUS Termite Attractant

- Natural, non-toxic, food-based granule
- Works with soil microbes to slowly release CO₂.
- University proven that CO₂ attracts termites
- Focus draws termites into the Exterra Stations
 - Instead of buildings....



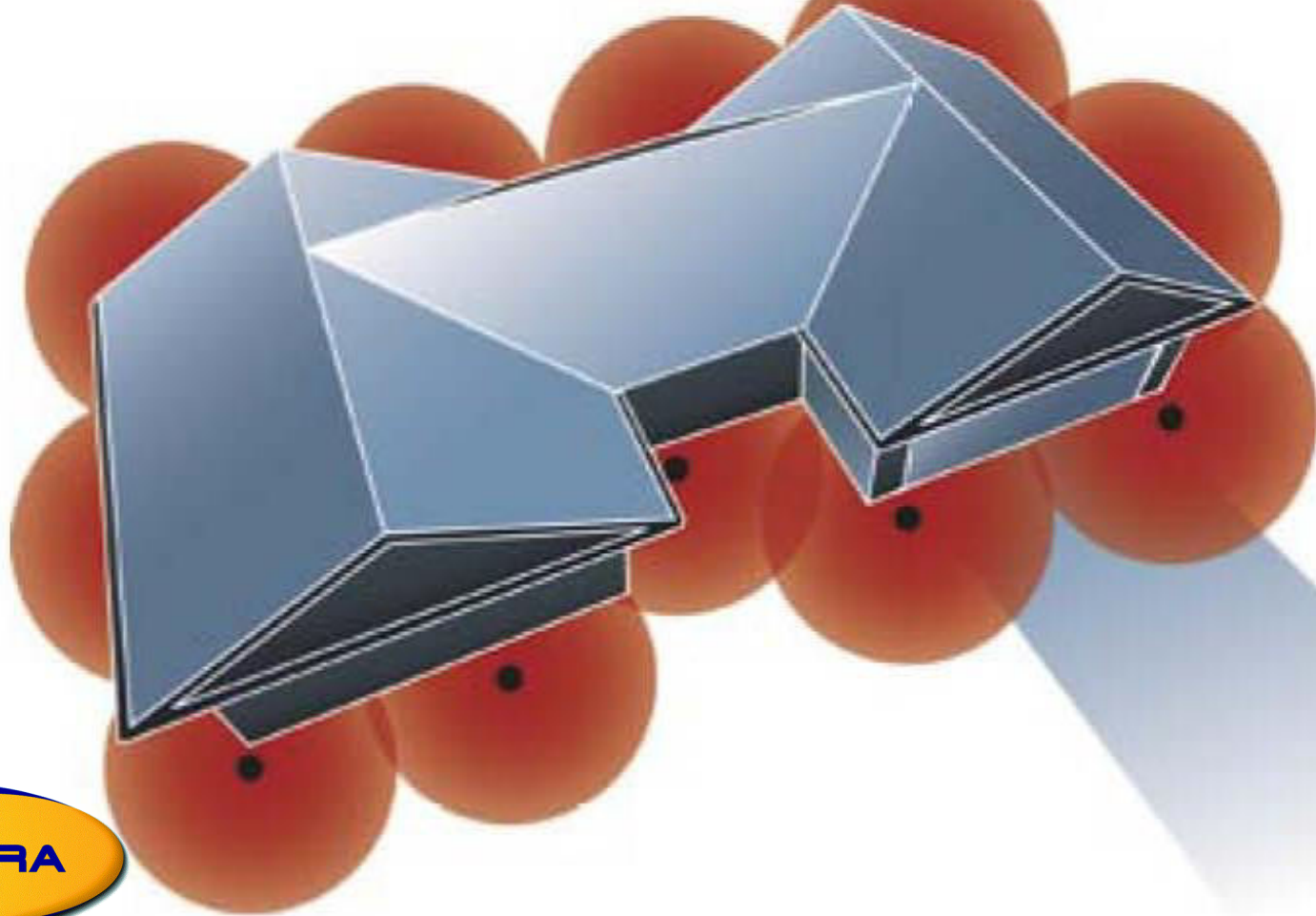
Creates a TERMITE INTERCEPTION ZONE

- So termites always find the Exterra Stations first



The only System that creates a complete Terminate Interception Zone around a building

- So the building is totally safe.



SAFE and ENVIRONMENTALLY friendly.

- Long term, effective
- Family-safe
- Environmentally responsible termite management
- Using Exterra In-ground Stations with
- **Focus Termite Attractant.**



PROTECTED

Requiem Termite Bait

- ACTIVE 1g/kg chlorfluazuron (0.1%)
- Technical Chlorfluazuron - Oral LD₅₀ rat - 8,500mg/kg
- **Requiem** - Oral LD₅₀ rat – 85,000,000mg/kg

Material Safety Data Sheet

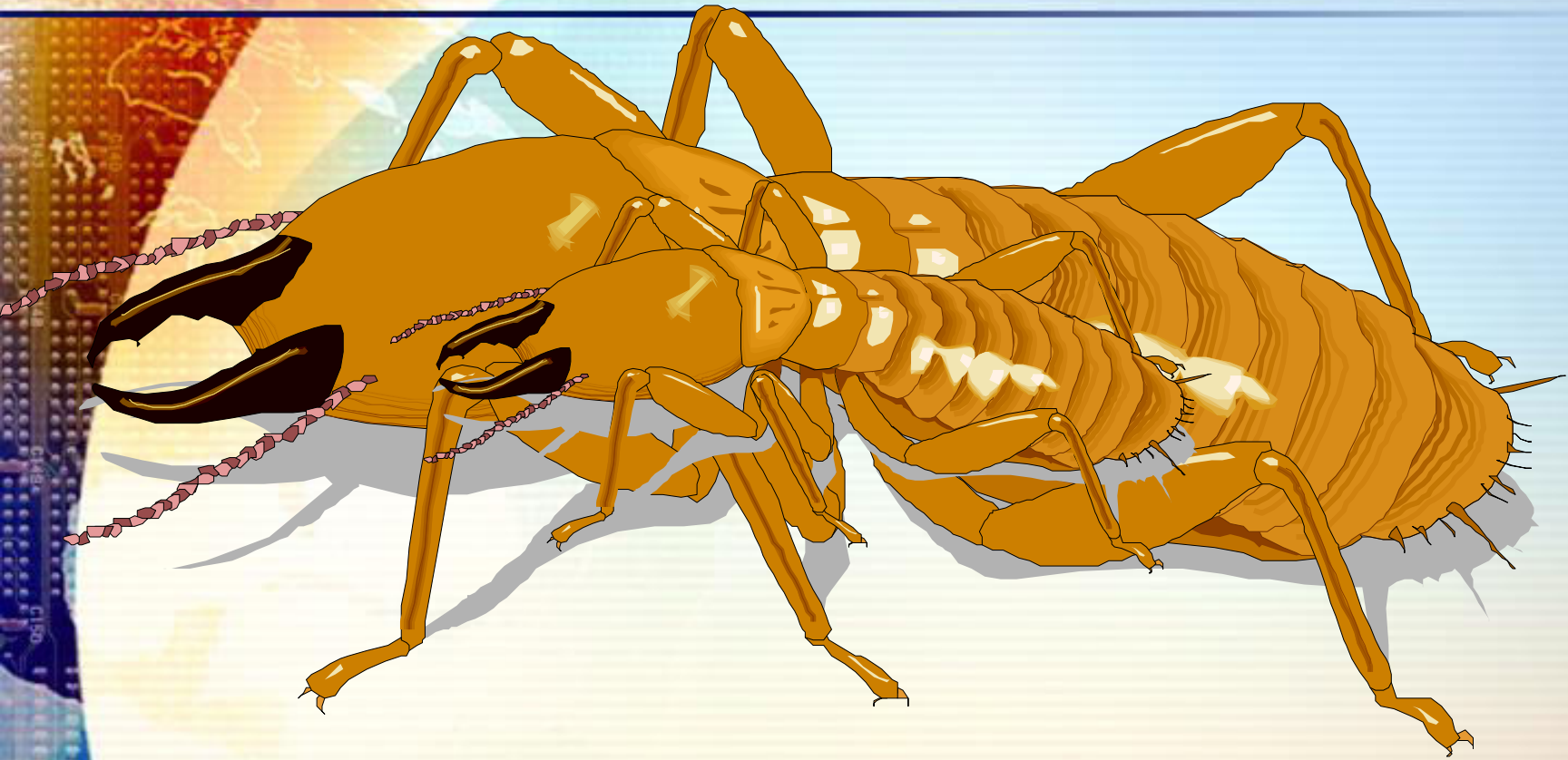
- **This product is considered non-toxic.**
 - No abnormalities in reproduction tests.
 - Teratogenicity (tumours) not observed in rats and mice.
 - All mutagenic tests were negative (reverse mutation, aberrant chromosomes and DNA repair).
 - Effects of large doses of chlorfluazuron were studied, but no abnormalities were observed (central nervous system, respiration, blood pressure and electrocardiograms).

Why is Requiem so Safe?

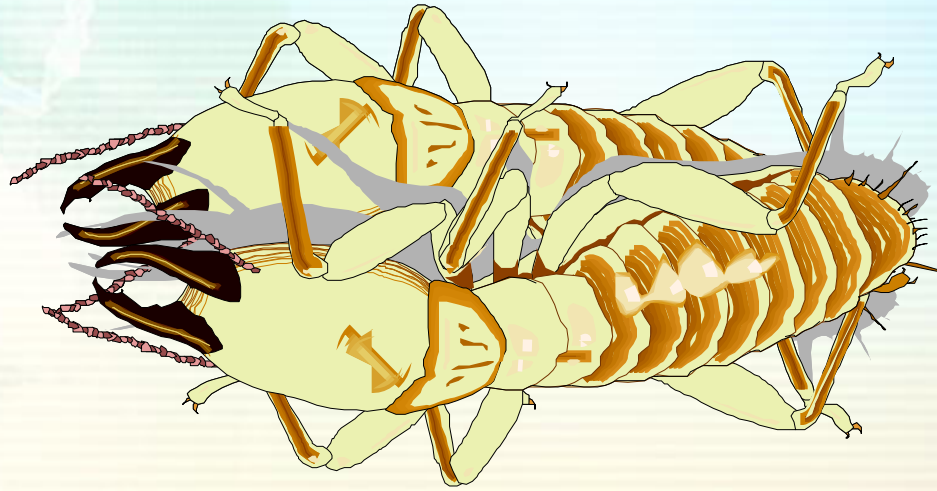
- It's Mode of Action is specific to insects
- A **Chitin Synthesis Inhibitor (CSI)**
- Only insects have an outer skeleton
 - made of chitin
- To grow they shed the outer skeleton
- Requiem **STOPS** new outer skeleton forming
 - It is thin and brittle
- So the termite dies



Normal moulting



Moult after Requiem



Requiem kills all life stages



EXTERRA





Exterra In Action



**Bait eaten.....
Add fresh bait**



Week 3





Behavioural Changes – Act differently

- Move slowly**
- Look sluggish**
- Sometimes outside of workings**

Week 3

Normal – mostly workers



Physiological Changes Colour changes



Week 4

Week 4

**Mostly Soldiers –
Caste ratio change**

Week 4



STALACMITES

Week 4

**Mostly soldiers
Due to workers dying first...**



Week 5



NO COLONY IS DEAD!!!s

The Measurable Steps to Success

So you know what is going on!!

- Did they **EAT** any Requiem? just 50g needed
- Did they show any **COLOUR** changes?
- Did they **ACT / BEHAVE** differently?
- Did you see a ratio change?
 - **MOSTLY SOLDIERS**
- Did you start seeing **FEWER TERMITES**?
- Now there are **NO TERMITES**?



Exterra's LARGER Stations intercept termites better

- Exterra Stations are 4x larger
- Scientific research proves this is better for intercepting and baiting termites
- So with larger Stations and Focus to direct them, termites will find a Station first
- And that guarantees the colony is eliminated
- **Keeping properties safe**



Exterra Eliminates all Termite Species:

- *Coptotermes formosanus*
- *Coptotermes acinaciformis*
- *Coptotermes frenchi*
- *Coptotermes gestroi*
- *Coptotermes havilandi*
- *Coptotermes curvignathus*
- *Coptotermes vastator*
- *Coptotermes treviens*
- *Coptotermes michaelsoni*
- *C. acinaciformis raffrayi*
- *Schedorhinotermes spp*
- *Heterotermes ferox*
- *Nasutitermes exitiosus*
- *Nasutitermes walkeri*
- *Microcerotermes spp*
- *Microtermes spp*
- *Porotermes adamsoni*
- *Reticulotermes spp*
- *Macrotermes gilvus*
- *Globitermes sulphureus*
- *Microcerotermes losbanosensis*

The logo for Exterra, featuring the word "EXTERRA" in a bold, blue, sans-serif font. The text is set against a yellow oval background, which is itself centered within a larger blue oval. The background of the slide features a stylized image of a termite mound and a circuit board.

EXTERRA

Exterra GUARANTEES to solve the problem

- Unique Exterra QUALITY tick
- Authorised and trained operators
- Station Barcoding



Over 10,000 km of buildings protected...



SINGAPORE ZOO

